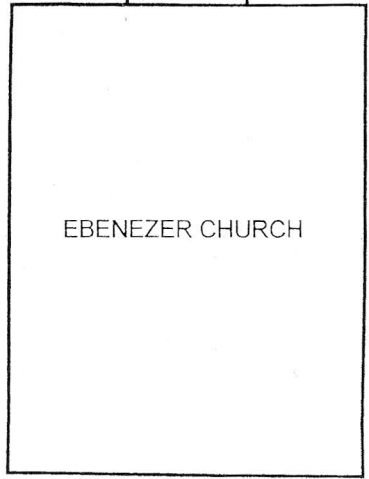
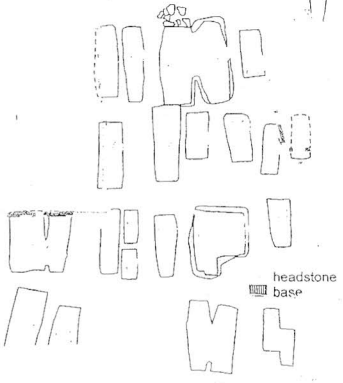
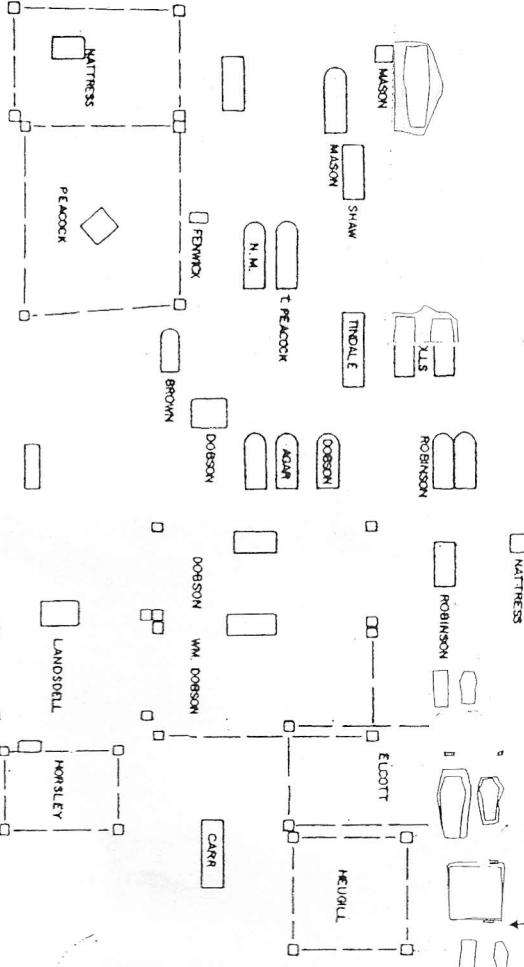
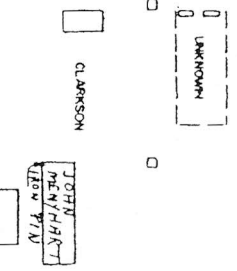
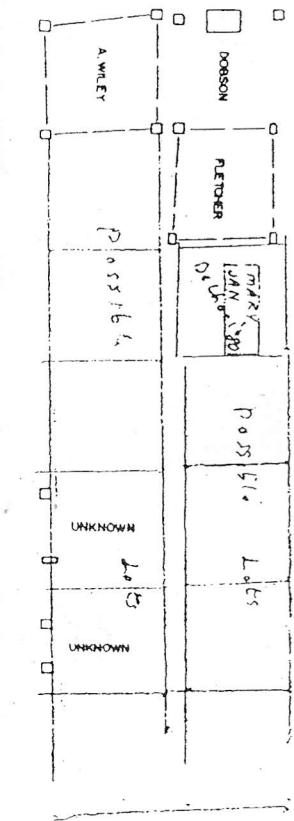
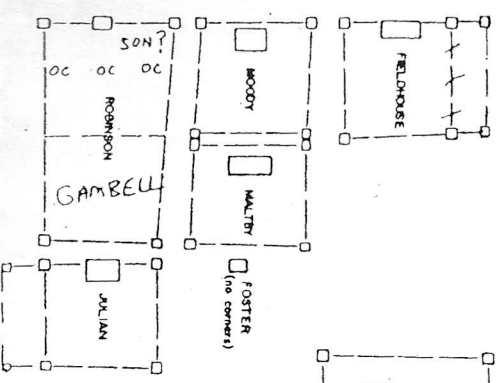


The Gore Road

new manhole
new sewer tree



EBENEZER CHURCH



Former flagstone pat

- Post •
- Post •
- Brick feature □

PLAN OF EBENEZER CEMETERY

BEING PART OF
LOT 5 CONCESSION 10 E.H.S.
TOWNSHIP OF
TORONTO GORE
COUNTY OF
PEEL

Footstone marked "C.P.H."



- Post •
- Flat stone slab □

Former driveway location